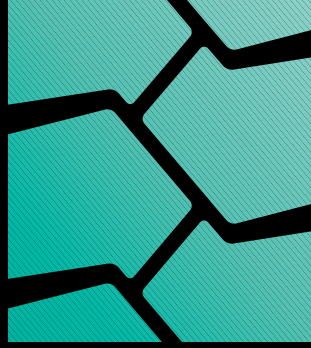
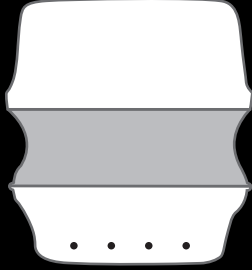


ORCA




RESILIENT TIRES



The Orca tire is developed with the latest technology. Quality compounds and a modern and highly functional design guarantee an attractive product with economical benefits:

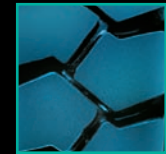
- **long mileage**
- **low energy consumption**
- **excellent cut resistance**

- **NATURAL RUBBER**
 - **GOOD RESISTANCE TO FATIGUE**
 - **HIGH STABILITY MAXIMUM SAFETY**
 - **OPTIMAL GRIP AND TRACTION**
-  **NON MARKING COMPOUND IS ALSO AVAILABLE**



ORCA

- **TRELLEBORG ENGINEERED**
- **PREMIUM COMPOUNDS**
- **HIGH RELIABILITY**
- **FOR USE IN INDUSTRIAL APPLICATIONS**
- **AVAILABLE IN POPULAR SIZES**



ORCA

Size	Rim Width	Profile	Loc	Dimensions		Load capacity (kg)				
				max. width	O.D.	Counterbalanced lift trucks up to 25 km/h		Other vehicles		
				mm	mm	Load Wheel	Steering Wheel	6 km/h	10 km/h	25 km/h
4.00 - 8	3.00 D - 8	sl	✓	130	406	950	730	950	860	730
5.00 - 8	3.00 D - 8	sl	✓	143	458	1415	1090	1415	1285	1090
15 x 4 1/2 - 8	3.00 D - 8	sl	✓	132	377	1040	800	1040	940	800
16 x 6 - 8	4.33 R - 8	sl	✓	164	417	1455	1120	1455	1320	1120
18 x 7 - 8	4.33 R - 8	sl	✓	187	453	2145	1650	2145	1950	1650
140/55 - 9	4.00 E - 9	sl	✓	131	377	1170	900	1170	1060	900
6.00 - 9	4.00 E - 9	sl	✓	173	529	1885	1450	1885	1710	1450
21 x 8 - 9	6.00 E - 9	sl	✓	216	524	2755	2120	2755	2505	2120
6.50 - 10	5.00 F - 10	sl	✓	191	576	2340	1800	2340	2185	1800
23 x 9 - 10	6.50 F - 10	sl	✓	243	583	3445	2650	3445	3125	2650
200/50 - 10	6.50 F - 10	sl	✓	221	458	2470	1900	2470	2240	1900
7.00 - 12	5.00 S - 12	sl	✓	207	657	2920	2240	2920	2640	2240
23 x 10 - 12	8.00 G - 12	sl	✓	275	583	3770	2900	3770	3420	2900
27 x 10 - 12	8.00 G - 12	sl	✓	275	676	3900	3000	3900	3540	3000
7.00 - 15	5.50 - 15	sl	✓	213	731	3545	2725	3545	3215	2725
7.50 - 15	6.50 - 15	sl	✓	234	757	3900	3000	3900	3540	3000
8.25 - 15	6.50 - 15	sl	✓	253	819	4750	3650	4750	4300	3650
28 x 9 - 15 (8.15-15)	7.0 - 15	sl	✓	233	693	3900	3000	3900	3540	3000
250 - 15	7.0 - 15	sl	✓	265	720	4640	3570	4640	4200	3570
300 - 15	8.0 - 15	sl	✓	324	823	5735	4410	5735	5210	4410
355/65 - 15	9.75 - 15	sl	✓	372	826	7800	6000	7800	6430	6000

The above load capacities are based on available E.T.R.T.O. specifications for load and steering wheels on counterbalanced forklift trucks.